



29 Clydesdale Street

, Bellshill, ML4 2RS

£600 Per month

NEW TO THE RENTAL MARKET!

Unfurnished and available now, a spacious and immaculate upper flat in an excellent location near to amenities and transport links.

Comprising entrance hall, large bright lounge, fitted modern kitchen with all appliances, 2 good sized bedrooms and lovely shower room.

DG. GCH. Communal garden to rear. Ample Parking. Wealth of storage throughout.

EPC C. LR 1163738/320/09012

- great location
- 2 good sized bedrooms
- wealth of storage
- communal enclosed rear garden
- ample parking to front
- Modern fitted kitchen with all appliances
- modern shower room

Viewing

Please contact our Pomphreys Properties Ltd Office on 01698373365 if you wish to arrange a viewing appointment for this property or require further information.



2



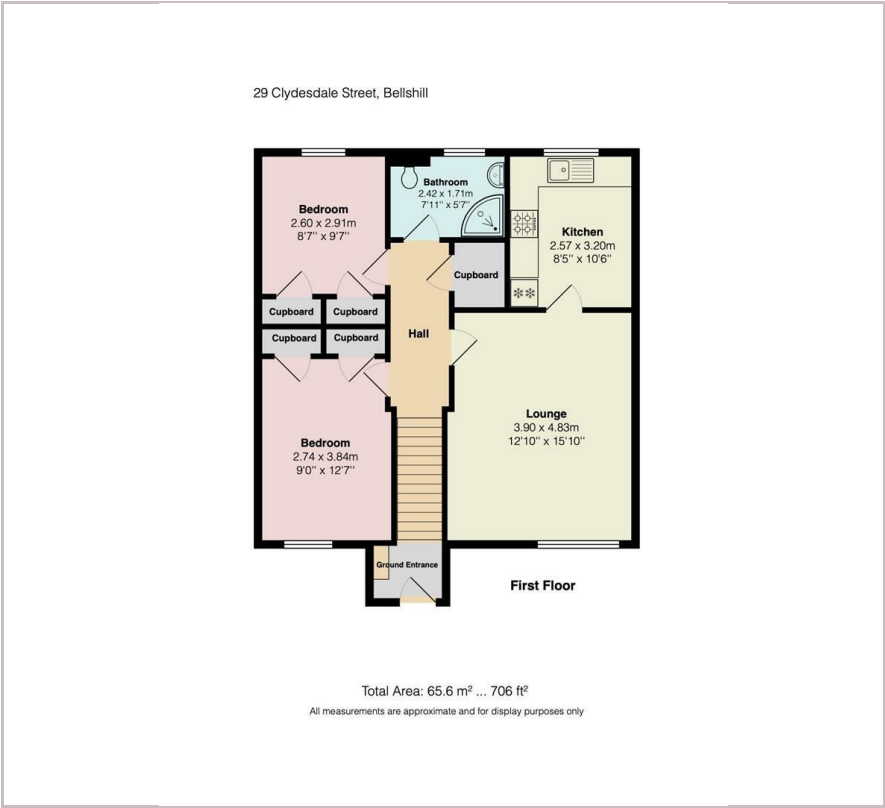
1



1



Floor Plan



Area Map



Energy Efficiency Graph



These particulars, whilst believed to be accurate are set out as a general outline only for guidance and do not constitute any part of an offer or contract. Intending purchasers should not rely on them as statements of representation of fact, but must satisfy themselves by inspection or otherwise as to their accuracy. No person in this firms employment has the authority to make or give any representation or warranty in respect of the property.